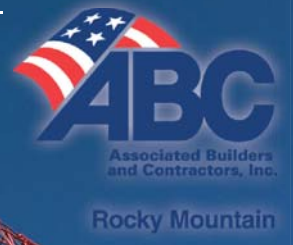


MERIT BUILDER

The Voice of Merit Shop Construction

SUMMER 2016 • Rocky Mountain Chapter



GOING BIG IN THEIR 35TH YEAR!
MORTENSON CONSTRUCTION - P. 22

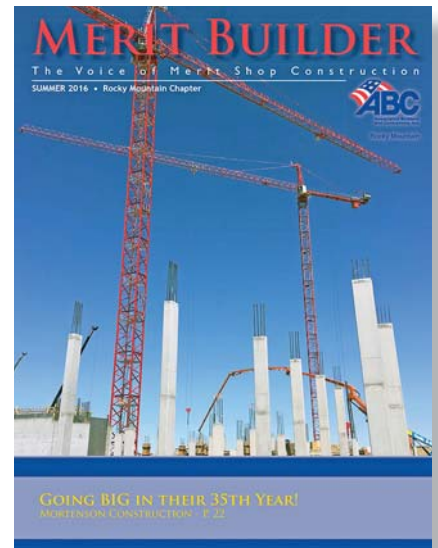
Featured Stories

- Mortenson Colorado - 35 years and Counting..... 22
- World Class Impact, National Award Recognition*
-MTech Mechanical..... 26
- 2016 Safety & Education Awards Banquet
& Business Expo..... 34

Departments

- | | |
|---|---|
| <ul style="list-style-type: none"> 4
Political Forefront 6
The Legal Pad 10
ABC Spotlight 18
CSU Round-Up | <ul style="list-style-type: none"> 20
On the Vertical Horizon 30
Education & Safety 38
Tech Talk 40
Young Professionals |
|---|---|

ABConline: www.abcrmc.org



SUMMER 2016
On the Cover:
MORTENSON CONSTRUCTION
*Gaylord Rockies Resort and
Convention Center*



Editor
Scott Merritt
303.832.5812 • E-mail: smerritt@abcrmc.org

Submission Deadline
Fall issue: September 9, 2016
Press releases and high resolution photos
accepted via email. Contact the editor for
more details.

Production
Scott Merritt
E-mail: smerritt@abcrmc.org
303.832.5812

Printing
OneTouchPoint
E-mail: info@1TouchPoint.com
303.227.1400

Address changes, comments and inquiries to:
Editor, ABC Merit Builder
2267 West Yale Avenue
Englewood, CO 80110
Phone: 303.832.5812
E-mail: smerritt@abcrmc.org

Merit Builder is published quarterly by the Associated Builders and Contractors, Inc., Rocky Mountain Chapter. Opinions expressed by contributors are not necessarily those of ABC.

2016 Executive Committee

Chairman
Darren Hinton
Milender White

Chair Elect
Jason Maxwell
White Construction Group

Vice-Chair
Rob Marceau
RK Mechanical, Inc.

Secretary
Aaron Eide
Flood and Peterson

Treasurer
Scott Oglesby
Bauerle and Company, P.C.

Past-Chair
Allan Bliesmer
Hensel Phelps

2016 Directors

Mari Bergstrom BT Construction, Inc.	John Luthi FCI Constructors, Inc.
Marissa Bolton Bobcat of the Rockies	Rachael Koch Power Management Systems & Sales, Inc.
Denny Doyle LPR Construction Co.	Pat Wolach Douglass Colony Group
Mark Griffin Turner Construction	Scott Larson Encore Electric, Inc.
Paul Giovannetti HITT Contracting	Trip DeMuth Faegre Baker Daniels

ABCRMC Staff

Mark M. Latimer President / CEO	Brett Denison Director of Member Services
Joanna Johnson Director of Meetings and Events	Jamie Villa Bookkeeper
Scott Merritt Director of Communications	Kim Grosel Director of Workforce Development

The Hensel Phelps Way

PEOPLE • PROCESS • PARTNERSHIP • TECHNOLOGY

BUILT TO PERFORM.

BUILT FOR QUALITY.

BUILT TO COLLABORATE.

BUILT TO INNOVATE.

Tyler
Office Engineer

Lily
Field Engineer

Patrick
Office Engineer

Jennifer
Controller



HENSEL PHELPS
Plan. Build. Manage.

420 Sixth Avenue
Greeley, Colorado 80631
970.352.6565

501 Lincoln Street
Denver, Colorado 80203
720.398.5700

GOT VALUE?

It's more than price. Value comes from labor-saving versatility that helps get the job right and makes you money.

MARKET LEADERSHIP

Bobcat Company is a leader in the compact equipment industry. No 50-ton excavators. No lawn mowers. Just compact equipment done right.

INNOVATIONS

It all started with the world's first skid-steer loader. Today, Bobcat Company continues to innovate based on customers' needs.

BOBCAT ATTACHMENTS

Choose from more than 70 Bobcat® attachments and implements that add value and increase productivity.

TAILGATE QUALITY ASSURANCE

We pledge to do what's right when you purchase a new skid-steer loader, compact track loader or compact excavator from us.

With Bobcat of the Rockies exclusive compact equipment focus, our 8 locations are positioned to support the Rocky Mountain region. Call 877-GO-4-BOBCAT to learn more.

Authorized Bobcat Dealers

Cheyenne, WY
Colorado Springs

Commerce City
Golden

Grand Junction
Parker

Pueblo West
Windsor

www.bobcatoftherockies.com

Bobcat®, the Bobcat logo and the colors of the Bobcat machine are registered trademarks of Bobcat Company in the United States and various other countries. 15-B273



Amendment 69 Would Double State Budget to Create Untested, Risky Government System



Mark Latimer
CEO / President,
ABC Rocky Mountain
Chapter

Colorado would be the first to embark on an untested system that has wide open questions about costs, coverage, access to care, accountability, regulation, and transparency.

Colorado voters will be facing a crowded ballot in November with issues ranging from taxes, alcohol, oil-and-gas to State Run Health. Colorado allows citizens to put issues on the ballot after going through a process that includes reviews by staffers with the Secretary of State, the attorney general and Legislative Legal Services. These reviews do not determine the merit of the proposal, only if it meets state standards to attempt to get on the ballot.

One of the most damaging issues on the 2016 Ballot will be Amendment 69 which would put a \$25 billion, Single-Payer, State Run Health Insurance Plan into the State Constitution. Companies would pay a new 6.7% payroll tax on top of existing taxes.

The Board of Directors for ABCRMC voted unanimously to oppose Amendment 69 and the board also voted to join Coloradans for Coloradans to defeat the Amendment. Coloradans for Coloradans is a bipartisan, statewide, diverse organization of Colorado Citizens who have come together to oppose Amendment 69. The campaign is backed by a who's who of business organizations and public officials.

How to Contribute

Make your check payable to "Associated Builders and Contractors, Rocky Mountain" and indicate it is for the "No on 69" campaign in memo section. Mail to the chapter (2267 W. Yale Avenue, Englewood, CO 80110) will aggregate the checks and make one contribution to the CFC Campaign on behalf of our members.

Here are some of the best reasons to oppose Amendment 69:

➤ The Government Run Health Care Plan Would Double The State Budget

Amendment 69 would levy unprecedented new taxes on every business and worker (as well as on pension and annuity income) to fund a \$25 billion entity an amount that doubles the current state budget. These new taxes (10 percent shared by employers and employees) would give Colorado the highest state taxes in the nation.

➤ Plan Hurts Small Business, Including Farms and Ranches

Amendment 69 will force virtually all owners of small businesses to pay both the employer's and

NO ON 69

Coloradans for Coloradans

employee's share of the new taxes. That adds up to a total of 10 percent off the top of their annual income.

➤ Amendment 69 Advocates Gloss Over Layers of Questions, Complexities and Complete Unknowns

The backers of the state single payer system promise a panacea for health insurance challenges. But Colorado would be the first to embark on an untested system that has wide open questions about costs, coverage, access to care, accountability, regulation, and transparency.

➤ No Guarantees for Coverage

One of the most pressing concerns of many Colorado families is the scope of their health insurance coverage, particularly for those who have worked hard to obtain specialized coverage. Coloradans would lose their existing coverage, and then have to hope that the board of trustees decides to replicate that coverage. If not, then they or their employers could attempt to secure specialty coverage in the open market which will be extremely expensive, if available at all.

➤ No Qualifications for Governing Board

The amendment specifically states that this new government run system would not be part of state government and would be run by a 21 member board elected by "members of the plan." The amendment is silent about whether the government system would be regulated by, or accountable to, the state, our elected officials or the people. There is no requirement that these trustees have any experience in health care, insurance or anything else. There are no requirements for ethnic, gender and age diversity, or balance in political affiliation.

➤ Amendment 69 Would Reverse Colorado's Vibrant Economic Growth

Colorado stands out as a magnet for new, cutting edge companies and the high quality workers they attract. Amendment 69 would give Colorado the highest state taxes in the nation in return for an untested, expensive and risky government run health insurance system. Other states will work to capture these companies and jobs when Colorado becomes too expensive and non-competitive.

➤ One State Cannot Change the Nation's Health Care System

No matter what one's personal views are on the merits of a single payer health system for the nation as a whole, it's naïve to think that one state can set up a single payer island amidst 49 other states and that this will spark national change.

➤ Embedded In Our Constitution And Can't Be Easily Changed

Backers of Amendment 69 have irresponsibly decided to make their plan a Constitutional amendment which, if passed, would be exceedingly hard to amend to address flaws with its implementation or operation.

For more information visit:

www.coloradansforcoloradans.com

FISHER & PHILLIPS LLP

ATTORNEYS AT LAW

Solutions at Work®

1801 California Street, Ste 2700 • Denver, CO 80202

Kate Raabe

Attorney at Law

Adam A. Brown

Attorney at Law

Practicing Management Labor and Employment Law

Including but not limited to:

- EEOC and Unfair Labor Practice Charges
- Employee Handbook Reviews
- I-9s and Other Compliance Rules
 - OSHA Complaints
 - NLRB Matters
 - Personnel Issues
- Wage Hour, OFCCP and Davis Bacon Audits

Phone (303) 218-3650 or (303) 534-0273

kraabe@laborlawyers.com

abrown@laborlawyers.com

OSHA Update: OSHA Announces Drastic New Recordkeeping and Retaliation Rule



Rod Smith



Patrick Miller

S&H SHERMAN
& HOWARD

On May 11, 2016, OSHA announced the issuance of a final rule regarding recordkeeping. The new rule will require certain employers to electronically submit their injury and illness records to OSHA on an annual basis. Establishments with 250 or more employees that are required to keep injury and illness records will be required to electronically submit to OSHA their 300, 300A and 301 forms. Employers in certain industries (including, but not limited to, construction and manufacturing) whose establishments have between 20 and 249 employees will be required to electronically submit their 300A annual summary forms. The rule states that OSHA will be providing a secure website for the transmission of this information. Also, the rule allows for certain redactions to be made, such as employee names, addresses, and health care provider information.

The rule takes effect on January 1, 2017. Employers must submit their OSHA 300A annual summaries by July 1, 2017. The requirements for the submission of 300 logs and 301 reports do not take effect until 2018, with those forms being due on or before July 1, 2018. Beginning in 2019, the forms will be due by March 2nd every year.

The new rule also contains provisions regarding “employee involvement” in recordkeeping and adds provisions related to retaliation. Employers will be required to inform each employee of their right to report injuries and illnesses and how to do so. Employers must also inform employees that they may not be retaliated against for such reporting. Procedures for reporting injuries must be “reasonable,” which OSHA defines as not deterring a reasonable employee from accurately reporting injuries and illnesses.

The new rule also states that employers are prohibited from retaliating against employees for reporting injuries or illnesses. The effective date for the retaliation provisions of the standard is August 10, 2016.

Though further study of the rule will be necessary, we believe that it is flawed in many respects. Most glaringly, the new rule contains anti-retaliation provisions that already exist under Section 11(c) of the Occupational Safety and Health Act. Whereas the statute itself calls for employees to assert individual claims of retaliation, and provides a process for doing so, this new rule will allow OSHA to issue citations for practices that it believes are retaliatory even in the absence of any employee complaint. Moreover, citations issued under this new

Though further study of the rule will be necessary, we believe that it is flawed in many respects. Most glaringly, the new rule contains anti-retaliation provisions that already exist...

rule will authorize OSHA to order abatement of the retaliatory practice, which could include a revision of employer policies, reinstatement, and/or monetary relief for any employee believed to be retaliated against. Employers now will be faced with more than just the prospect of citations related to safety and health conditions. They could very well find themselves defending citations relating solely to their employment practices and seeking abatement that is akin to the sort of civil damages ordered in employment litigation cases. We believe that such issues are more properly left to the courts, not OSHA or the Occupational Safety and Health Review Commission.

The rule may be accessed on OSHA's website at www.osha.gov/recordkeeping.

Rod Smith, Pat Miller, Chuck Newcom and Matt Morrison are part of Sherman & Howard's Labor & Employment Law Department, practicing in the areas of occupational safety and health law. They routinely appear before the federal Occupational Safety and Health Review Commission, the federal Mine Safety and Health Review Commission, and state occupational safety and health boards. You can contact them at 303.299.8354 or visit www.shermanhoward.com. ■

**ONE CONTACT
ONE RELATIONSHIP
COAST TO COAST**

SKILLED TRADES

Tony Becker
Western Regional VP

c - 303-968-7623 tonyb@skilledtrades.com
www.skilledtrades.com

GREINER
electric LLC

303.470.9702

DENVER • COLORADO SPRINGS
LOVELAND • WYOMING

www.greinerelectric.com

Swedish Medical Center Fifth Floor Remodel
ABC Excellence In Construction - 2014 Award of Excellence



DENVER SKYHOUSE

**PROUD WINNER OF AN
ABC 2015 EAGLE
EXCELLENCE IN
CONSTRUCTION AWARD**



2271 West Yale Avenue
Englewood, CO 80110
303-934-3303

COMMERCIAL ~ INDUSTRIAL ~ TENANT FINISH ~ DESIGN/BUILD
CONCEPTUAL BUDGETING ~ SPECIAL SYSTEMS ~ SERVICE



COLORADO GENERAL HOSPITAL

We specialize in anything and everything to do with rebar. Our safety and quality programs and records are unsurpassed in the industry. We are bondable for projects to 10,000,000. Our history of successful projects includes treatment plants, bridges, high rise, tilt panels, mining facilities, chip manufacturing, wind and solar power farms.

GREAT WESTERN



ERECTORS

Rick Johnson

Colorado Regional Office Project Manager

6320 Beach Street, Denver CO 80221

Office No.: 303 783 8510

Fax No.: 303 783 8502

Cell phone: 303 901 1410

Rick@gwerebar.net



AFFORDABLE



HEALTHCARE



SENIOR



MUNICIPAL



OFFICE



HIGHER ED



*RAISING THE STANDARD SINCE 1962
ACROSS COLORADO'S FRONT RANGE.*

Jim Mellor
Vice President
303.986.4555
www.pinkardcc.com

AMI MECHANICAL INC

CONTRACTORS / ENGINEERS / SERVICE

BUILDING RELATIONSHIPS. DELIVERING VALUE.



Providing Mechanical Services Since 1991

- Specializing in Design-Build and Design-Assist
- Prefabrication
- Building Information Modeling
- Construction
- Service
- Energy Performance

12141 Pennsylvania Street, Thornton, Colorado 80241
(303) 280-1401 | www.amimechanical.com



CRS is a private and locally owned full-service insurance agency servicing Denver and the Rocky Mountain region.

The construction industry is where we are most successful.

- Insurance
- Surety Bonds
- Loss Control Services

Providing exceptional service to our customers remains as our most fundamental goal.

David Hite, ARM

303.996.7830 • DHite@CRSdenver.com



Colorado's Partner for Construction Staffing.

Denver Metro
303-238-1330

Northern Colorado
970-587-2645

www.blueprint-inc.com



New Members in 2016

ABC Rocky Mountain has welcomed 14 new companies as members since the spring issue. Following is a list of those companies.

Autonation Chevrolet

Associate

7320 N. Broadway • Denver, CO 80221

Contact: Don Gassaway • gassawayd@autonation.com
autonationchevroletnorth.com • (303) 301-2435

Commercial and fleet sales/service. Fleet leasing and ordering. Business Elite Dealer with Chevrolet, Fleet & Commercial service supporting large accounts with preferred service hours and pricing.

BluSky Restoration Contractors, LLC

General Contractor

9767 East Easter Avenue • Centennial, CO 80112

Contact: Chris Condon • ccondon@goblusky.com
goblusky.com • (303) 726-9419

We provide commercial and residential restoration, renovation and environmental services in both the public and private sectors. Since 2004, we've supported our claim of superior customer service by maintaining our 96 Proof Philosophy; 96% of our clients say "I would hire BluSky again." As Colorado's largest turn-key restoration company, BluSky's Environmental Division has performed asbestos abatement, mold remediation, select demolition, and other environmental services since we founded the company.

Bristlecone Construction

General Contractor

2629 W Main Street, Ste. 105 • Littleton, CO 80120

Contact: Zach Smith • zsmith@bristleconeconstruction.com
www.bristleconconstruction.com • (720) 449-3909

Bristlecone Construction is a general contractor based in Littleton, Colorado. Our jobs include commercial projects, multi-family, renovations, subcontracting and distinctive properties. We focus on projects that are too complex for most small construction firms yet are too small for larger firms in town.

Colorado Mechanical Insulation & Firestopping, Inc.

Specialty Contractor

2090 W. Bates Avenue • Englewood, CO 80110

Contact: Robert Miner • rminer@cminsulation.com
cminsulation.com • (303) 278-2942

Colorado Mechanical Insulation & Firestopping, Inc. is an experienced mechanical insulation and firestopping subcontractor performing work at commercial and industrial projects in Colorado, Wyoming, Nebraska and Utah.

Elevation Staffing

Associate

2555 S. Sante Fe, Ste 250 • Denver, CO 80223

Contact: Greg Wiese • greg@elevationstaffingdenver.com
www.elevationstaffingdenver.com • (720) 215-0935

We specialize in providing skilled labor for the Electrical trade only. We service the Denver metro and surrounding areas with a focus on the commercial and industrial/oil and gas sectors.

Glesby Marks Ltd.

Associate

12000 East 47th Avenue, Ste 117 • Denver, CO 80239

Contact: Nick Risoli • nrisoli@glesbymarks.com
www.glesbymarks.com • (720) 457-5759

Glesby Marks is a national, independent vehicle and equipment leasing company. Since 1976 our objective has been to help our customers reach their financial goals through convenient, cost effective and innovating leasing solutions.

Ignite Video Productions

Associate

1140 US Highway 287, Ste 400-174 • Broomfield, CO 80020

Contact: Bob Jones • bjones@ignite.today
www.ignite.today • (720) 722-1070

Ignite Video Productions produces business videos that brand, teach and promote businesses. Our videos are on Broadcast T.V., client YouTube Channels and websites. We promote the "Expert You," brand products and teach your clients and customers.

Keller Williams Realty

Associate

50 S. Steele St, Ste 700 • Denver, CO 80209

Residential Contact: Sean Closset • seanclosset@kw.com
seansellscolorado.com • (720) 208-7175

Commercial Contact: Peter Leider • peterleider@kw.com
www.usincomepropertyteam.com • (303) 974-8501

Commercial/Residential real estate.

MSC Safety Solutions

Associate

12071 Tejon Street, Ste 200 • Westminster, CO 80234

Contact: Troy Clark • tclark@mscss.com
www.mscss.com • (303) 477-1044

MSC Safety Solutions was founded in 1990 and we believe

that we can succeed if we honor our past, present and future. Our purpose is to ensure that our clients, as well as our employees, reach their full potential. We can achieve this through quality service, responsibility, trust, honesty, integrity, and above all, by honoring ourselves, our clients and our families. We will continue to cultivate our roots to grow in knowledge, service and loyalty. We will achieve success.

RMG - Rocky Mountain Group

Industry/Design Professional

14 Inverness Drive East Suite E-136 • Englewood, CO 80112
Contact: Lee Shakespeare • lshakespeare@rmg-engineers.com
rmgengineers.com • 303-688-9475

Since 1986 RMG has been building strong client relationships. Our focus is on solving problems through creative solutions and practical architecture and engineering.

Seneca Contracting and Design L.L.C.

General Contractor

2741 W. Oxford Ave., #4 • Englewood, CO 80110
Contact: Aimee Davidson • aimee@senecagroup.net
senecacd.net • (303) 225-1873

General contracting, design and remodel of residential properties, as well as commercial tenant finish.

Sherman & Howard L.L.C.

Associate

633 Seventeenth St., Ste. 3000 • Denver, CO 80202
Contact: Bret Gunnell • bgunnell@shermanhoward.com
www.shermanhoward.com • (303) 297-2900 ext. 8242

Full service Denver-based law firm with dedicated construction industry practice group, representing all participants in the construction industry.

The Social Movement

Associate

2435 South Broadway • Denver, CO 80210
Contact: Wayne Merritt • wayne@thesocialmovement.com
http://www.TheSocialMovement.com/
(303) 557-2399

The Social Movement is a custom social media marketing company that specializes in growing your presence online and reaching more potential customers.

Trojan Labor

Associate

410 Jefferson Street, Ste B • Fort Collins, CO 80524
Contact: Bruce Charlson • bcharlson@trojanlabor.com
trojanlabor.com • (970) 416-0070

Temporary Staffing/Labor Company.

Spotlight continued on next page



Since 1921, Woods & Aitken LLP has focused its construction practice on developing long-term client relationships and assisting in attaining our clients' objectives.

**Drafting and Analyzing Contracts
Development and Presentation of Negotiation Positions
Litigation, Arbitration and Participation in Claim
Discussions and Settlement Proposals**

We would like to learn more about you and explore the possibility of becoming a partner in your ongoing success. Visit us on the web or contact our Denver office to learn more.



8055 EAST TUFTS AVENUE, SUITE 525 ■ DENVER, CO

www.woodsaitken.com | 303.606.6700

**ONE CONTACT
ONE RELATIONSHIP
COAST TO COAST**

SKILLED TRADES

Tony Becker
Western Regional VP

c - 303-968-7623 tonyb@skilledtrades.com
www.skilledtrades.com

Construction Forecast with Anirban Basu, ABC's Chief Economist

Denver

Nearly 250 people attended this year's event at the Four Seasons Hotel Denver downtown on April 21st. The keynote speaker was **Anirban Basu**, ABC's Chief Economist.

Mr. Basu provided his usual wisdom and wit while talking about trends, the economic landscape and what might lie ahead for Colorado and the rest of the U.S. during his presentation.

Thank you to everyone who attended and, of course, thank you to our event sponsors!

Presenting Sponsor: **United Rentals**

Premier Sponsors: **Citywide Banks, Encore Electric, Inc., and HITT Contracting**

Major Sponsors: **Duro Electric and EKS&H**

Supporting Sponsors: **Hensel Phelps, Jones Hearts Building Supply, and Kenny Electric.**

Industry Co-Hosts: **Rocky Mountain Masonry Institute and The Risk Management Association**

Media Sponsor: **Colorado Real Estate Journal.**



Anirban Basu addresses the audience.

11th Annual Clay Shoot

Brighton

Thank you to all the shooters who braved the cold weather on Thursday, April 28th for our 11th Annual Clay Shoot at Colorado Clays. Over 200 people were in attendance despite the weather.

Fist Place with a score of 251 was the **Great Western Erectors** team:

- **Mark Meyer, Great Western Erectors**
- **Tom Anderson, CMC Rebar**
- **JD Benson, Suncoast Post Tension**
- **Shaun Sweeder, Suncoast Post Tension**

Second Place with a score of 232 was the **United Rentals** team:

- **Alex Reed, United Rentals**
- **Nick Powers, Powers Built Structures**
- **Dave Powers, Powers Built Structures**
- **Nathan Wooding, United Rentals**

Third Place with a score of 229 was the **Hertz Equipment Rental** team:

- **Christopher Wyant, Hertz Equipment Rental**
- **Sam Gluck, Weifield Group**
- **Chris Hargett, Hertz Equipment Rental**
- **Robert Cox, Terex**

We also held a drawing to benefit CSU for two shotguns. The drawing winners were **Devon Ames** of **Bobcat of the Rockies** and **Jon Hornick** with **MTech Mechanical**.

Of course we owe a huge thanks to all our volunteers and our sponsors. Their help and support go a long way in making this event a success!

Tournament Sponsors: **EKS&H and TrueNorth Construction Specialty Group**

Shell Bag Sponsors: **HPE Heating & Plumbing Engineers, and Horseshoe Marketing / Kaeser & Blair**

Lunch/BBQ Sponsor: **Bobcat of the Rockies**

Shell Sponsors: **Blueprint Skilled Services and FCI**

Constructors

Beverage Sponsors: **Bauerle & Company, HITT Contracting and Sunstate Equipment Co.**

Cart Sponsor: **4Rivers Equipment**

Water Cart Sponsor: **Hensel Phelps**

Earplugs and Safety Glasses Sponsor: **Colorado Safety Supply**

Prize Sponsor: **Milender White and Cabela's**

Station Sponsors: **4Rivers Equipment, AAA Waterproofing, Adolfson & Peterson, DS Constructors, Eaton Sales Service LLC, Flood & Peterson, Hensel Phelps, LPR Construction Co., Spacecon Specialty Contractors and Sunstate Equipment.**

Continued on page 14



The 1st Place Great Western Erectors team with the traveling trophy.



SAVE THE DATE

Excellence In Construction Awards Program

October 21, 2016 at 6:00 pm
Four Seasons Downtown Denver
1111 14th St. • Denver, CO 80202

IMPORTANT 2016 LOCAL DATES

Saturday, October 15th: Project must be completed by
Friday, August 26th by 5pm: Submit project(s) to ABC

For questions or to register for the awards program contact Joanna Johnson:
303.832.5812 or jjohnson@abcrmc.org

Upcoming Events

ABC Essentials

Wednesday, July 13th • ABC Offices

7th Annual Cajun Boil

Thursday, July 21st • Bobcat of the Rockies

1st Annual ABC Shoot Out

Thursday, July 28th • DCF Guns

NoCo August Economic Development Panel

Thursday, August 11th • Colorado Youth Outdoors

ABC 500 PAC Fundraiser

Thursday, August 18th • Unser Racing

NoCo Golf Tournament

Thursday, September 8th • Pelican Lakes Golf Course

Beers & BBQ Fundraiser

September 15th • More information to come

*Check the events calendar at
www.abcrmc.org/events for more details.*



Ignite Your Brand

Brand

- Promote your brand
- Your expertise
- You're different

Credibility

- Be must have vendor
- Exceed client expectations
- Uniquely serve client needs

Trust

- Standards of ethics
- Display commitment & passion
- Your belief, your cause, your why

Optimize

- Optimize your SEO
- 30 million opportunities daily
- 10X the impact of text

Video production is affordable

More powerful than you think!

IGNITE YOUR BUSINESS TODAY!

Video production for business

FREE Consultation 720-722-1070

www.ignite.today

38th Annual Campbell Amble Memorial Golf Tournament

Lakewood

Tuesday, June 14th was another great event and a beautiful day at Fox Hollow Golf Course - a course we haven't been back to for a while.

This year's first place winner with a score of 53 was **Turner Construction: Mark Griffin, Chris Pickett, Erik Henry and Mike Keith.**

Second place went to the **Transwest BUICK GMC ISUZU** with a score of 55: **Ben Reed, Andy Dryer, Matt Baumgartner** with **Enterprise Fleet Management** and **Jay Reed.**

Also with a score of 55 and taking third place was the **Olson & Olson** team: **Matt Olson, Lance Olson, Matt Wiersma** with **Diamond Drilling & Sawing Co.** and



First Place team: Turner Construction

Eric Pelletier with **S.N.S. Iron Works Inc.**

Thank to our tournament sponsors:

- **Duro Electric**
- **Hensel Phelps**
- **HITT Contracting**
- **Milender White**
- **TIC – The Industrial Company**

We also had other sponsor companies who generously donated toward this event.

Beverage Cart Sponsors:

- **4Rivers Equipment**
- **Bauerle & Company**
- **Blueprint Skilled Services**

Breakfast Sponsor:

- **Mortenson Construction**

Awards Sponsor:

- **Turner Construction**

Golf Cart Sponsor:



- **Spacecon Specialty Contractors**

We had six contest holes and the winners were as follows:
Closest to the Pin, sponsored by Now CFO: Alex Reed of United Rentals;

Closest to the Pin, sponsored by EKS&H: Brent Sampson with Mortenson Construction;

Closest to the Pin, sponsored by BBSI: Mike Keith with Turner Construction;

Longest Drive sponsored by ABC's Young Professionals: Dave Rutkowski with Tradesmen International;

Longest Drive sponsored by Ignite Video Productions: Chris Krause with Sunbelt Rentals;

Longest Drive sponsored by Kenny Electric: Sean McMahon with Kenny Electric.

Following are the members who *sponsored a tee box:*

- **C.H.I. Companies**
- **Drywall Partitions**
- **F.A.S.T. LLC**
- **Faegre Baker Daniels**
- **Flood and Peterson**
- **H&E Equipment Services**
- **LPR Construction**
- **MTech Mechanical**
- **Preferred Safety Products, Inc.**
- **The Social Movement**
- **Sunstate Equipment Company**
- **Supreme Corporation**
- **TIC - The Industrial Company**
- **Tradesmen International**
- **Trojan Labor**
- **United Rentals Power & HVAC**
- **Weld County Garage**

There was also a silent auction during the lunch portion of the tournament. Thank you to the following companies for being so generous and donating items for the auction: **FCI Constructors, Inc., Faegre Baker Daniels, Tradesmen International, Power Management Systems & Sales, Preferred Safety Products and Hensel Phelps.**

Thank you to everyone who participated in this year's tournament including players, sponsors, volunteers and the Golf Committee! We hope to see you all again next year.

BBQ at the Ballpark

Colorado Springs

On June 17th, nearly 100 ABC Members and prospective members took to Security Service Field in Colorado Springs to cheer on the Sky Sox (Triple A Affiliation of the Milwaukee Brewers). Everyone enjoyed watching the game from the First Command Banquet Hall, while enjoying a full BBQ dinner, drinks, and drawing prizes, followed by a fun fireworks display after the game. A very special thank you to our sponsors:

- **Barrett Business Services, Inc.** - Kidz Fun Zone Sponsor
- **Encore Electric** – Drink Sponsor
- **Heating & Plumbing Engineers, Inc.** – Balcony Sponsor
- **Hensel Phelps** – Food Sponsor
- **Hitt Contracting** – Drawing Sponsor
- **LPR Construction** – Parking Sponsor
- **Matsuo Engineering** – Drawing Sponsor
- **Spacecon Speciaty Contractors, LLC** – Drawing Sponsor

Members and guests at the ballpark



Ian Hillgartner of ASI Signage Innovations throws out the first pitch





Residential | Commercial | Industrial


Fast & Professional Service - *Guaranteed!*

- Troubleshoot & Repair
- Fuse / Breaker Replacement
- Facility Wiring
- Equipment Hookup / Circuits
- Machine Shop Wiring
- Office Lighting & Maintenance
- Design – Build
- Process Wiring
- Industrial Controls
- Cost Benefit Analysis

**Providing Award-Winning
Innovative Team Performance Since 1983**


303.422.9219
www.piperelectric.com
5690 Jay St. • Arvada, CO 80003

PIPER
ELECTRIC CO. INC.
YOUR POWER PERFORMANCE TEAM



TEMPAIR®
RENTAL SERVICES

HEATING COOLING
DEHUMIDIFYING AIR FILTRATION



TEMPORARY CLIMATE CONTROL
(800) 577-7053 Temp-Air.com

WE'RE A TRUE PARTNER IN PROJECT DEVELOPMENT



RK Mechanical is the region's leading full-service merit shop mechanical contractor. Our project development capabilities ensure that all plumbing, piping, sheet metal and HVAC installations are done more quickly, safely and efficiently.

More Than Mechanical Contracting

- Design-build partners
- BIM: industry-leading CAD
- Service: 24/7 facilities maintenance
- Steel contractor: structural/miscellaneous
- Water treatment solutions



rkmi.com
303.355.9696



MECHANICAL | SERVICE | STEEL | ENERGY | WATER | ELECTRICAL



Western Colorado Social

Tuesday, August 9, 2016 • 4:00 - 6:00 pm

**Warehouse 25SixtyFive Kitchen & Bar
2565 American Way • Grand Junction, CO 81501**

Join other area contractors for drinks and appetizers at the newest restaurant/bar in Grand Junction!

RSVP to Brett Denison at 303.832.5812 or bdenison@abcrmc.org

White
CONSTRUCTION GROUP

INTEGRITY.
INTELLIGENCE.
INNOVATION.
Since 1985

18 South Wilcox
Suite 100
Castle Rock, CO 80104
(P) 303.688.6924
(F) 303.688.6265

www.WHITECG.COM

in f s p b t

Flood and Peterson is proud to support the
Associated Building Contractors of Rocky Mountain

**YOUR LIFE.
YOUR SAFETY.
YOUR SECURITY.
OUR PRIORITY.**

F&P Flood and Peterson

Commercial Insurance | Employee Benefits | Surety | Home - Life - Auto
Denver | Greeley | Fort Collins
www.floodpeterson.com

**FROM
THE
GROUND
UP**

WE KNOW WHAT
IT TAKES TO BE A
CONSTRUCTION
SPECIALIST.

Helping build successful businesses.

For over 35 years, Bauerle and Company has experienced genuine satisfaction in helping our clients in the construction industry build successful businesses. We offer on-site, quality professional financial, tax and business advisory services that require a high level of construction experience and knowledge.

Bauerle and Company, PC
Certified Public Accountants

Audit and Accounting • Tax • Advisory
Specialized Accounting Solutions
Wealth Management • IT Solutions

7887 East Belleview Avenue, Suite 700
Denver, CO 80111 • 303-759-0089
www.bcdenver.com



CSU Elects Officers, Selects Competition Team



The CSU Construction Management Chapter elected their officers for 2016. The elected officers are as follows:

- Daniel Simmons** - President
- Ty Eberhardt** - Vice President
- Kyle Deuschle** - Secretary
- Tanner Atchison** - Treasurer
- Daniel Kovach** - Historian

The Chapter also selected the competition team that will be traveling to Dallas, Texas for the ABC Student Chapter Construction Management Competition during ABC's Leadership Week November 13-16.

- Ty Eberhardt** (Captain)
- Ian Rice**
- Tanner Atchison**
- Kyle Deuschle**
- Darcy Wojciechowski**

Good luck to the team as they prepare and head to Dallas later this year!



HWY 34 & 47th AVE · (970) 352-1313
www.WeldCountyGarage.com



Serving Northern Colorado for Over 100 Years!



COMMERCIAL • FLEET • BUSINESS

**OLSON &
OLSON Ltd**

COMMERCIAL INSURANCE | PROFESSIONAL INSURANCE
PERSONAL INSURANCE | SURETY SERVICES | SAFETY AND
RISK MANAGEMENT | EMPLOYEE BENEFIT SERVICES
WORKERS' COMPENSATION

WE DON'T BELIEVE YOU CAN
WE KNOW YOU WILL

The principals at Olson & Olson, Ltd. have been meeting some of the country's most challenging risk management needs since 1983. We provide liability protections and full insurance coverages for the challenges you see and the many you don't.

**GIVE US A CALL TODAY
SO WE CAN BACK YOU UP TOMORROW.**

303-867-2055 olsonandolson.com

LPR CONSTRUCTION



Steel Erection Services Pre-Construction
Industrial Construction In-Plant Services

PARTNER WITH US.

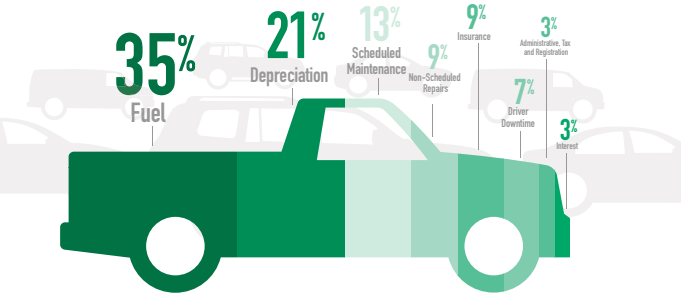
Teamwork drives the engagement required to streamline the construction process and exceed expectations.



LPRconstruction.com



How much are your company's vehicles costing you?



Many factors impact the cost of operating your company's vehicles, but one matters most to your bottom line – your **TOTAL COST OF OWNERSHIP**. It's the grand total of all expenses incurred over the lifetime of your vehicles.

To learn more, contact Larry Caster at 303-925-8447.
Larry.Caster@efleets.com or visit us online at efleets.com.



Enterprise and the 'e' logo are registered trademarks of Enterprise Fleet Management, Inc. All other trademarks are the property of their respective owners. ©2016 Enterprise Fleet Management, Inc. F04255_3.62x4.875

COLORADO'S CHOICE FOR BUSINESS INSURANCE, PERSONAL LINES & EMPLOYEE BENEFITS

Moody Insurance is a family-owned business with a proud tradition of serving Colorado businesses and communities. We offer expansive capabilities to meet virtually any commercial insurance, risk management, bonding, employee benefits, or personal lines need.

Our products, coupled with Moody Insurance's superior client service model, dramatically improve your ability to receive the best coverage and price in a challenging insurance marketplace.

DENVER: 303.824.6600
GRAND JUNCTION: 970.248.8300
COLORADO SPRINGS: 719.533.3100

Tax Incentive Extended for Firms Designing Energy-Efficient Government Buildings



Jason Jobgen
Alliance Services



Jeremy Carnahan
Partner



The recently signed *Protecting Americans from Tax Hikes (PATH) Act of 2015* included extensions of many popular tax incentives—but perhaps one of the most important for architecture, engineering and construction firms was extension of the Section 179D deduction.

Background

Enacted by the *Energy Policy Act of 2005*, the Energy Efficient Commercial Building Property (179D) deduction provides a tax incentive for firms who are involved in the design of green building projects. Internal Revenue Code Section 179D allows a deduction of up to \$1.80 per square foot for owners of new energy-efficient property. For energy-efficient buildings owned by federal, state or local governments, the agency can allocate the 179D deduction to the firm(s) responsible for designing the building or related building systems. This lets the design firm claim the additional tax deduction in the year the property is placed in service.

This provision was set to expire as of December 31, 2014, but the PATH Act retroactively extended the deduction for property placed in service during 2015 and prospectively extended it for property placed in service in 2016.

What Is This Incentive Worth?

The 179D deduction can be taken over the aggregate amount of the deduction for the building for all earlier years. A building can

take the 179D deduction in one of two ways:

1. \$1.80 per square foot for an entire building if it exceeds energy reduction thresholds
2. Up to 60 cents per square foot for each of the following systems that exceed energy reduction thresholds:
 - Heating, ventilation and air conditioning
 - Lighting
 - Building envelope

What Has Changed?

Prior to the extension, a building qualified for the 179D deduction by reducing energy use as compared to the 2001 American Society of Heating, Refrigerating and Air Conditioning Engineers (ASHRAE) standards. The PATH Act increased the energy use reduction requirement by replacing the 2001 ASHRAE standard with the 2007 ASHRAE standard for property placed in service beginning in 2016.

What Is Required to Claim the Deduction?

Design firms claiming the 179D deduction as allocated from a governmental agency must meet three documentation requirements:

1. A letter from the government agency allocating the deduction, signed by an authorized representative of the agency. Obtaining this allocation letter can be a significant hurdle for design firms seeking the deduction - it's not unusual for a design firm to request an allocation letter from a government entity only to find out the allocation has already been made to another

firm involved in the project. This allocation letter needs to include specific information spelled out by the IRS, including:

- Name, address and telephone of the agency's authorized representative
 - Name, address and telephone number of designer's representative
 - Name and address of the government-owned building
 - Cost of qualifying property
 - Date the qualifying property was placed in service
 - Amount of the deduction being allocated to the designer
2. An energy model must be performed, using a U.S. Department of Energy-approved software program, showing the energy use reduction compared to the relevant ASHRAE standards.
 3. Independent third-party certification stating the energy-efficient property used in the model was actually installed in the building also is required. The certification requires a physical inspection of the qualifying building and must be signed by a locally licensed contractor or engineer.

Who Qualifies?

Any person or firm involved in the technical design of the property may qualify for the 179D deduction. This can

include architects, engineers, design-build firms, general contractors, energy and sustainability consultants and others. Individuals or firms solely responsible for installation, repair or maintenance of energy-efficient property would not qualify.

Prior-Year Projects May Qualify

If the government-owned building was placed in service during a previous year, the 179D deduction still may be available. An amended tax return may allow the design firm to claim the deduction, potentially leading to a refund for previously paid tax.

If you perform design work for government-owned buildings and need help determining your eligibility for 179D deductions, contact your BKD advisor.

The BKD Construction and Real Estate Group understands and can assist you in improving performance, gaining control over internal finances and overcoming challenges to meet strategic goals. We have specialized knowledge of your business and offer solutions tailored to your industry. You can contact them at 303.861.4545 or visit www.bkd.com. ■



experience ideas

BKD National Construction & Real Estate Group

What's your destination? Wherever you're headed, chances are we've been there. You need guidance. BKD can help. Experience how **our round-the-clock commitment to ideas can help you light a path to success.**

Denver // 303.861.4545
 Colorado Springs // 719.471.4290
bkd.com

experience BKD
 CPAs & Advisors

TEAMWORK | INTEGRITY | COMMITMENT



ABOVE ALL, BUILDING RELATIONSHIPS

Since 1973, Turner Construction has been shaping the skyline of Denver. As the largest general contractor in the country, Turner is a leader in all major market segments including healthcare, education, commercial, sports, aviation, pharmaceutical, retail, and green building.

Driven by a commitment to continuous improvement, Turner embraces Building Information Modeling and lean construction methods to improve efficiency and enhance client value. The company has earned recognition for undertaking complex projects, fostering innovation, embracing emerging technologies, and making a difference for clients, our employees, and the local community.

Turner
turnerconstruction.com/denver

View of the 85 acre site from the top of one of the tower cranes.



Mortenson Colorado - 35 years and Counting

Rendering of the exterior of the Galylord Rockies Resort & Convention Center.
Courtesy of Mortenson/WELBRO.



Mortenson Construction celebrates its 35th year of operation in Colorado in 2016 and the future looks brighter than ever. Mortenson is well underway on its largest hospitality project in the company's history and its largest project ever to date in the state – the nearly two-million-square-foot Gaylord Rockies Resort and Convention Center. This 1500-room hotel and convention center is being built by a joint venture team comprised of Mortenson and WELBRO Building Corporation. Work on the 85-acre site is progressing in earnest, as evident by the four tower cranes visible to the east off of Peña Boulevard near 64th Avenue, and just a few miles away from one of Mortenson's other

recent hotel projects – the Denver International Airport Hotel and Transit Center.

The Mortenson/WELBRO Joint Venture was selected by RIDA Development Corp. to deliver the hotel and convention center along with the associated retail and commercial space in late 2013. The hotel will feature 1,507 guest rooms including 114 suites. It will include a grand lodge with views of the Rockies; eight restaurants; an indoor-outdoor resort pool complex with a lazy river; spa and salon; fitness center; walking trails and outdoor basketball and tennis courts.

Work began in early January on the vertical construction of the hotel and convention center. It is expected that

Continued on next page



By Nancy Kristof
Sr. Marketing Communications
Manager,
Denver Operating Group



Four tower cranes are being utilized on site - the largest can lift approximately 44,000 pounds.



Concrete foundation walls and columns getting poured.



Rendering of the grand staircase leading to the Resort's main lobby. Courtesy of Mortenson/WELBRO.



Rendering of the Grand Lodge with sweeping views of the Rockies. Courtesy of Mortenson/WELBRO.

The project is also a game-changer for Mortenson in that it has led to one of its largest self-perform infrastructure contracts in Colorado.

Mortenson/WELBRO will have well over 30 prime subcontractors and numerous sub-tier subcontractors on the project. With more than 1.9 million square feet being constructed simultaneously, it will require a significant workforce and close coordination of materials, labor and equipment. Workers will erect 6,800 tons of structural steel and install 12,100 squares of metal decking. More than 70,000 cubic yards of concrete will be poured.

The project is expected to create or sustain nearly 10,000 construction jobs and lead to 1,500 permanent, direct jobs.

The project is also a game-changer for Mortenson in that it has led to one of its largest self-perform infrastructure contracts in Colorado. Mortenson is self-performing utility work onsite and managing the onsite infrastructure package. The self-perform utility work includes installation of reinforced concrete pipe storm drain, precast storm and sanitary sewer structures, waterlines, cast in place concrete structures, riprap and erosion control.

In addition to the onsite work, Mortenson is completing the management of an offsite infrastructure package where they self-performed utilities along 2.5 miles of 44th Ave from Tower Road to E-470 and 0.5

miles of infrastructure along Himalaya Drive north of 64th Ave. It also included the reconstruction of the West Fork of Second Creek including a pedestrian underpass and bridge spanning the creek.

More than 10,000 lineal feet of utility piping has been placed to date and more than 120,000 cubic yards of dirt has been moved as part of the earthwork scope. Concrete formwork on the vertical portion is underway and it won't be long before we're able to see more than cranes as the structures take shape and rise from the east metro plains.

Substantial completion of the Gaylord Rockies Resort Hotel and Convention Center is scheduled for late 2018.

Founded in Minneapolis, Minnesota in 1954, Mortenson Construction is a privately held corporation owned by the Mortenson family. Mortenson distinguishes itself by providing services based on our core values of Trust, Service, Safety, Responsibility, Stewardship, and Teamwork.

Providing our customers with the best experience is our first priority. Our team members truly believe in meeting the customers' needs by having a strong partnership with each project's Owner, Designer, Engineer, and Subcontractors.

Contact them at (303) 295-2511 or visit www.mortenson.com ■

The Mortenson / WELBRO team gathers after 7:00am "stretch and bend," which is part of the project's safety program.



Building what's next.

**Exceptional People.
Exceptional Teams.**



Mortenson

Mortenson
construction

4 Rivers Equipment
4 SIGHT Solutions



Peace of Mind. Maximizing Uptime.
That's what 4 SIGHT Solutions machine care Packages will do for you. Our 4 SIGHT Solutions team uses technology such as JDLINK, Fleet Care, inspection reports, and oil analysis to monitor your machine operations.



JOHN DEERE

4RIVERS
EQUIPMENT

www.4RiversEquipment.com

Albuquerque, NM
2301 Candelaria Rd. NE
(505) 884-2900

Colorado Springs, CO
1100 E. Cheyenne Rd.
(719) 475-1100

El Paso, TX
11323 Rojas Dr.
(915) 598-1133

Farmington, NM
1100 Troy King Rd.
(505) 326-1101

Fort Collins, CO
125 John Deere Dr.
(970) 482-7154

Frederick, CO
3763 Monarch St.
(303) 833-5900

Hobbs, NM
2400 W. Bender Blvd.
(575) 392-6923

Pueblo West, CO
685 E Enterprise Dr.
(719) 547-3505

The IBC was a portable, modular, reusable building that was fabricated in Turkey. The panels were broken down, shipped here to the U.S. and assembled on the side of Beaver Creek Mountain.



World Class Impact, National Award Recognition

Molly Cape
Sales & Marketing
Coordinator



Recently, MTech Mechanical was given the ABC National Excellence in Construction Pyramid Award for their success on the International Broadcasting Center (IBC) at the 2015 FIS Alpine World Ski Championships. “This award is an honor, especially for our mountain group that executed the project in extreme climatic conditions to meet the expectations of our client. From start to finish, our team demonstrated a commitment to innovation, safety and quality, which is clearly evident in the completed product.” MTech President, **Marco Capitelli** said.

The IBC was a modular, plain-looking building sitting on the side of the mountain that none of the attendees, who came in record numbers, would ever notice. However, without that building, the event could not have been seen by any of the millions watching from home around the globe.

The structure was fabricated in Turkey, sent across the Atlantic, and then hauled cross country to Beaver Creek, Colorado. MTech Mechanical was contracted by the event host to be on site during the event to provide support when needed, however, the project turned out to be much more challenging.

Code Compliance and Making a Plan

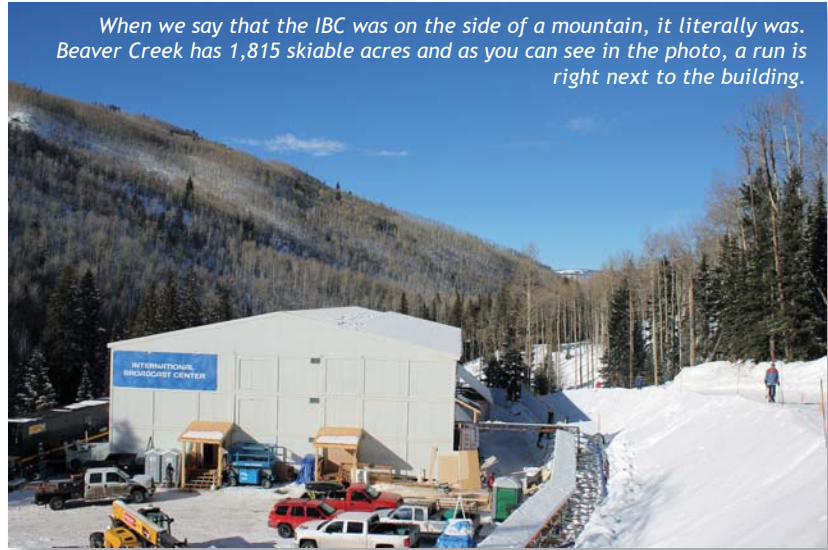
Similar buildings like this are used at different sporting events worldwide. However, most of the time they are one-story high and in a moderate climate. For this event however, the building had to be put on the side of a mountain at a very busy ski resort. The plan to stack the containers three-stories high didn't accommodate for the safety and code requirements for a multi-story building.

The plan also neglected to include ventilation in the building. Even though it would be February and the windows would bring in cold air, that didn't quite cut it. The first few phone calls from around the globe made it clear that this project was not going to be built without MTEch's help. Aside from the time zone differences, language barriers, and the use of metric units on all drawings, MTEch was asked to design a solution to meet the code requirements with three restrictions – there was zero budget for the upgrades, there was zero space to put any equipment, and zero penetrations could be made in the panels.

The MTEch team started designing and determined that forced air with a heating duct distribution system on each level would address the ventilation code requirements. Make up air units were needed, but no one had any extra space for the equipment. After some brainstorming and creative thinking, one men's room stall on each level was sacrificed to house the units.

Several systems were analyzed for cost and size to address the cooling requirements. The best option was ductless mini-split systems running to each of the spaces, but this also involved finding a place to house the outdoor condenser units. It was determined the only outdoor space available was under the building in the crawlspace created by the wooden platform. The event took place in February in the Rocky Mountains which meant the units needed to be kept warm enough so they could start up on a cold day, but also needed ventilation to keep from overheating.

Continued on next page



When we say that the IBC was on the side of a mountain, it literally was. Beaver Creek has 1,815 skiable acres and as you can see in the photo, a run is right next to the building.



The three-story, 35,000 sq. ft. building was assembled on a wooden platform. The panels were already pre-wired and pre-plumbed and it was expected to be an easy set-up.



Because of the space constraints, the 23 outdoor condenser units were put in the crawlspace underneath the building. Temperature control was key so skirting was put around the building to protect the units from the elements.

Executing the Plan

Once the plan was designed and approved, construction began. There were weekly conference calls with the international team to discuss every detail as the project came together. Safety was the highest priority at this job. MTech’s protocol included personal protective equipment, toolbox talks and regular site inspections by the Director of Safety. MTech craftspeople were also proactive in recommending other safety precautions for the entire site. We are proud of our safety record and are pleased to report zero injuries or fatalities on this project.

Winning Results

Not only did the United States take away five medals, but MTech had winning results as well. The cooling system worked as designed and there was zero lost broadcasting time. MTech had two employees on-site throughout the event to provide support as needed. The event took place during the warmest days on record for February and concerns about condensers performing in cold weather quickly turned to concerns of units over-heating. The units were monitored closely throughout the event without incident.

MTech Mechanical is a premier design-build contractor with offices in Westminster and Avon, Colorado. They pride themselves on superior technical expertise, enhanced client relationships and total mechanical solutions. Contact them by calling (303) 650-4000 or visit www.mtechg.com. ■



An estimated 1,500 people operated out of the building and every square inch was allocated for various pieces of high tech broadcasting monitors, cameras, computers and other equipment.



In the month of January, Beaver Creek received approximately 50 inches of snow and the average temperature was 34° F during the month. When conditions were tough, we had to take extra precautions with our teams’ safety.



For their efforts, MTech won the ABC National Excellence in Construction Pyramid Award. Pictured are David Chapin, 2016 ABC National Chair and Jeff Tymkovich, MTech Mountain Operations.

Welcome to a better mechanical experience.

MTech Mechanical leads the industry in quality, reliability and technical aptitude focused on creating better experiences for our clients and building smarter, more efficient environments. Our integrated and dynamic approach to mechanical systems puts you - “ahead of the curve.”



www.mtechg.com

TRANSFORMING YOUR ENVIRONMENT

PANELIZED METAL STUD FRAMING



- **Total design flexibility**
- **1 & 2 hour UL assemblies**
- **Simplified field erection**
- **Construction in $1/4$ of the time**
- **Complete turn-key solution**

DOUGLASS | COLONY

is the exclusive FRAMECAD manufacturer for the Rocky Mountain Region



DOUGLASS | COLONY

www.DouglassColony.com/FRAMECAD

P: (303) 288-2635

Effective June 17th 2016 ANSI/ ISEA Z308.1-2015: Time to Replace Your First Aid Kits



Valerie Boyd
Owner



Effective June 17, 2016, there is a new ANSI/ISEA Z308.1-2015 standard for Workplace First Aid Kits & Supplies. The old ANSI standard was for first aid kits to be manufactured based on how many persons would have access to the kit. The new standard recommends two types of kits which come in different sizes to better fit the needs for your exposures, these are referenced as **Class A and Class B Kits**.

Class A Kits are designed to provide first aid for the most common types of workplace injuries (i.e. offices and vehicles).

Class B Kits are designed with more extensive supplies to provide additional first aid in a more complex or high risk environment. The Class B kits are required for more populated, complex and/or high risk environments. For example, a Class B Kit would be used on site anytime PPE - Personal Protective Equipment - is present (i.e. commercial and residential jobsites).

Since these new changes are effective on June 17, 2016, now is the time to start phasing out your

older 10, 25, and 50 Person First Aid Kits. These kits will no longer be compliant under the ANSI standard.

Colorado Safety Supply Company understands these upcoming changes and we are able to provide you with answers on questions you may have in regards to this standard that is recommended. Listed below, please find the table explaining the minimum stocking requirements for the new First Aid Kits.

Colorado Safety Supply Company is a Local Affinity supplier, so as an ABC member you will receive a 5% discount on top of our competitive pricing. We are here to help! For more information or find out how to personalize your kits today contact your ABC Safety Council member **Valerie Boyd** 303-537-5832 or via email her at info@coloradosafetysupply.com.

Colorado Safety Supply Company can make recommendations but the customer is ultimately responsible for understanding and meeting the new ANSI/ISEA Z308.1-2015 standards requirements. ■

Comparison 2015 ANSI Minimum Fill Requirements for Class A and Class B Kits

Description	Old Standard	Class A Quantity	Class B Quantity	Minimum Size or Volume
Adhesive Bandages	16	16	50	1" X 3"
Adhesive Tape	6	1	2	2.5 Yards
Antibiotic Treatment	16	10	25	0.14 fl oz
Antiseptic	10	10	50	0.14 fl oz
Breathing Barrier	-	1	1	
Burn Dressing	-	1	1	4" X 4"
Burn Treatment	6	10	25	1/32 oz
Cold Pack	-	1	2	4" X 5"
Eye Coverings	-	2	2	
Eye Wash	-	1	1	1 oz - Class A / 4 oz - Class B
First Aid Guide	-	1	1	
Hand Sanitizer	1	6	10	1/32 oz
Medical Exam Gloves	2	2	4	Pairs
Roller Bandage	1	1	2	2" X 4 yd
Roller Bandage	-	-	1	4" X 4 yd
Scissors	-	1	1	
Sterile Pads	4	2	4	3" X 3"
Tourniquet	-	-	1	1"
Trauma Pads	1	2	4	5" X 9"
Triangular Bandage	1	1	2	40" X 40" x 56"